



# Community Governance Review Committee

Agenda and Reports

For consideration on

**Thursday, 25th November  
2010**

In Council Chamber, Town Hall, Chorley

At 4.30 pm



[www.chorley.gov.uk](http://www.chorley.gov.uk)

This page is intentionally left blank

17 November 2010

Dear Colleague

**COMMUNITY GOVERNANCE REVIEW COMMITTEE - THURSDAY, 25TH NOVEMBER 2010**

You are invited to attend a meeting of the Community Governance Review Committee to be held in Council Chamber, Town Hall, Chorley on Thursday, 25th November 2010 commencing at 4.30 pm.

**AGENDA**

1. **Election of Chair**

To appoint a Chair for the Community Governance Review Committee.

2. **Apologies for absence**

3. **Declarations of Any Interests**

Members are reminded of their responsibility to declare any personal interest in respect of matters contained in this agenda. If the interest arises **only** as result of your membership of another public body or one to which you have been appointed by the Council then you only need to declare it if you intend to speak.

If the personal interest is a prejudicial interest, you must withdraw from the meeting. Normally you should leave the room before the business starts to be discussed. You do, however, have the same right to speak as a member of the public and may remain in the room to enable you to exercise that right and then leave immediately. In either case you must not seek to improperly influence a decision on the matter.

4. **Community Governance Review for Buckshaw (Pages 1 - 6)**

A presentation on the process of undertaking a Community Governance Review – Carol Russell, Democratic Services Manager and Phil Davies, Principal Corporate Support Officer.

To consider a draft timetable for the review (to be circulated at the meeting).

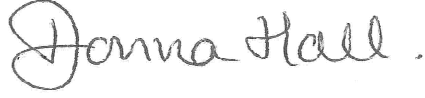
A copy of the report approved by Council on 2 November 2010 is attached for information.

5. **Buckshaw Village: Future Development**

A presentation on the current and expected future development of Buckshaw Village – Nicola Hopkins, Principal Planning Officer (Major Projects).

6. **Any other item(s) that the Chair decides is/are urgent**

Yours sincerely



Donna Hall  
Chief Executive

Dianne Scambler  
Democratic and Member Services Officer  
E-mail: dianne.scambler@chorley.gov.uk  
Tel: (01257) 515034  
Fax: (01257) 515150

**Distribution**

1. Agenda and reports to all Members of the Community Governance Review Committee Peter Goldsworthy, Greg Morgan, Beverley Murray, Mark Perks, Geoffrey Russell, Stella Walsh and Peter Wilson for attendance.
2. Agenda and reports to Donna Hall (Chief Executive Chorley Council), Chris Moister (Head of Governance), Carol Russell (Democratic Services Manager), Alex Jackson (Senior Lawyer), Phil Davies (Principal Corporate Support Officer), Nicola Hopkins (Principal Planning Officer (Major Projects)) and Dianne Scambler (Democratic and Member Services Officer) for attendance.

**This information can be made available to you in larger print or on audio tape, or translated into your own language. Please telephone 01257 515118 to access this service.**

આ માહિતીનો અનુવાદ આપની પોતાની ભાષામાં કરી શકાય છે. આ સેવા સરળતાથી મેળવવા માટે કૃપા કરી, આ નંબર પર ફોન કરો: 01257 515822

ان معلومات کا ترجمہ آپ کی اپنی زبان میں بھی کیا جاسکتا ہے۔ یہ خدمت استعمال کرنے کیلئے براہ مہربانی اس نمبر پر ٹیلیفون

01257 515823

کیجئے:



Report of	Meeting	Date
Chief Executive (Introduced by the Executive Leader)	Council	2 November 2010

## COMMUNITY GOVERNANCE REVIEW FOR THE BUCKSHAW AREA

### PURPOSE OF REPORT

- To consider whether to undertake a Community Governance Review of the Buckshaw area following a request received to create a Parish Council for the Buckshaw area of Chorley Borough.

### RECOMMENDATION(S)

- That Members determine whether a Community Governance Review should be undertaken of the Buckshaw area.
- That, if a Community Governance Review is agreed, then a Committee of seven Members be appointed and given delegated authority to oversee the process up to the final recommendation stage when full Council would be required to make a decision.

### EXECUTIVE SUMMARY OF REPORT

- The Local Government and Involvement in Health Act 2007 gave local Councils power to undertake Community Governance Reviews of parish boundaries and to introduce changes without requiring approval from the Boundary Committee for England.
- A request has been received for the Council to undertake such a review of the Buckshaw area with a view to potentially creating a Buckshaw Parish Council, rather than Buckshaw being served by Euxton and Whittle le Woods Parish Councils as at present.
- The report outlines the processes which make up a Community Governance Review including consultation, resources and officer support and also some potential outcomes of a Review.

### CORPORATE PRIORITIES

- This report relates to the following Strategic Objectives:

Put Chorley at the heart of regional economic development in the Central Lancashire sub-region		Develop local solutions to climate change.	
Improving equality of opportunity and life chances		Develop the Character and feel of Chorley as a good place to live	
Involving people in their communities	/	Ensure Chorley Borough Council is a performing organization	/



## **CURRENT PARISH ARRANGEMENTS IN THE BUCKSHAW AREA**

8. At present the Chorley Council part of Buckshaw is served by two Parish Councils – Euxton Parish Council and Whittle le Woods Parish Council (see attached map). The area of Buckshaw which lies in South Ribble Borough Council area is not parished.

## **THE COMMUNITY GOVERNANCE PROCESS**

9. The Community Governance Review process looks at whether the current parishing arrangements best serve the local community. This includes whether they achieve community engagement, better local democracy and more convenient and effective delivery of local services. Reviews can take some time to complete, although they must be concluded with 12 months.
10. The Community Governance Review process cannot look at Borough ward boundaries, Borough boundaries or Parliamentary constituency boundaries. Changes to these require a full Boundary Committee Review. Whilst the Boundary Committee have been asked to look at the Council boundary around the Buckshaw area, they have informed us that it will be some years before this can be scheduled and the forthcoming Parliamentary boundary review will receive priority.
11. The process to be adopted in undertaking a Community Governance Review is set out in Government guidance and is summarised as follows:
- Once a decision is made to undertake a review, terms of reference are drawn up for approval by either full Council or a committee appointed to oversee the review. The terms of reference set out the drivers to a review; current arrangements; what is being investigated; the process – including consultation plans and timetables; they would also include maps and Council tax/precept information. It does not include recommendations at this stage.
  - There can then be a short period to receive submissions from interested parties.
  - Draft recommendations are then drawn up and published for consultation.
  - Following consultation, final recommendations are drawn up for approval by full Council and then published.
  - Assuming a change to current arrangements is agreed, then a Reorganisation Order is drawn up which includes a timetable for implementation. This includes the impact on the Electoral Register and the Elections process.

## **CONSULTATION**

12. Consultation arrangements must be robust. At the preliminary stage submissions could be invited from those directly affected – the Parish Councils and local residents and residents groups.

However the consultation process on the draft recommendations should involve all those affected:

- County Council, Borough Council, Parish Council
- Residents of those areas
- Partners with an interest in the area
- Those involved in the wider picture of community governance for the area eg the management agreement operated by Red Row

## **POTENTIAL OUTCOMES AND IMPLEMENTATION**

13. We cannot anticipate what the outcome of a review might be but the request received is for a review to amalgamate the current parished areas within Buckshaw into one new Parish Council for Buckshaw Village, with the other parishes being adjusted accordingly. In effect, this could mean, for example, that:

- The existing Whittle-Le-Woods Parish Ward of Whittle-Le-Woods West would lose approximately 512 electors (within polling district 10C) to the new parish.
  - The existing Euxton Parish Ward of Euxton North East would lose approximately 457 electors (within polling district 02C) again to the new parish.
  - The number of seats within the existing parishes would be reviewed with regard to the change in the electorate.
  - A new parish would be formed consisting of polling districts 10C and 02C with a current electorate in the region of 969. An appropriate number of parish council seats would need to be determined, although the legislation stipulates that the minimum number of seats in a Parish Council is 5.
14. A Community Governance Review would look at this option along with any other option which came out of the review process and the consultation. It would also look at the potential to unparish the area – particularly in light of the South Ribble part of Buckshaw being unparished. The purpose of such a review is to look at all options.
15. The timescale for implementation of new arrangements is 1 April following the publication of the Reorganisation Order. If a Review was to be undertaken this is likely to be April 2012.

**IMPLICATIONS OF REPORT**

16. This report has implications in the following areas and the relevant Directors’ comments are included:

Finance		Customer Services	
Human Resources		Equality and Diversity	
Legal	/	No significant implications in this area	

**COMMENTS OF THE DIRECTOR OF TRANSFORMATION (HEAD OF GOVERNANCE)**

17. The legislative framework for the undertaking of Community Governance Reviews is contained with the Local Government and Public Involvement in Health Act 2007. This provides an opportunity for Councils to consider parishing arrangements within their borough. Although no petition from the public has been received to undertake this review, the proposal requires consideration due to the particular characteristics of this area.

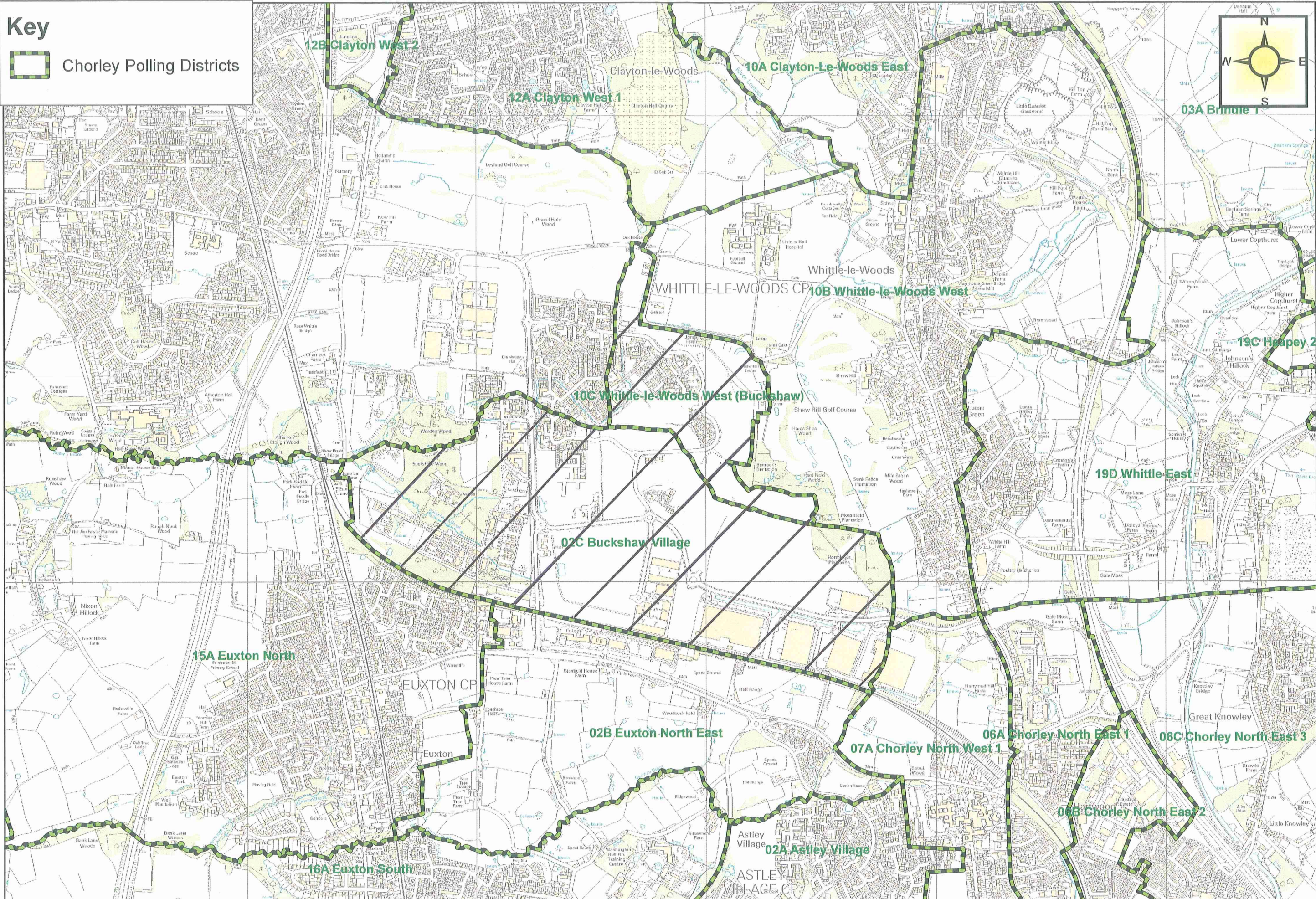
**DONNA HALL  
CHIEF EXECUTIVE**

Report Author	Ext	Date	Doc ID
Carol Russell/Phil Davies	5196	11 October 2010	***

Background Papers			
Document	Date	File	Place of Inspection
DCLG Guidance on conducting Community Governance Reviews	April 2008		

This page is intentionally left blank





This page is intentionally left blank